

IN THIS ISSUE:

- 14** Click. Check. Park. Introducing Our Real-time Parking Webpage!
- 18** Recreation Programs and Events, Spring/Summer 2026
- 25** America 250: A Bethlehem Block Party



IN THIS ISSUE...

- 04 Mayor's Address
- 05 Council President's Report
- 05 City Council Report
- 06 Bethlehem Fire Department
- 07 Bethlehem Police Department
- 08 Department of Community and Economic Development
- 09 Health Department
- 10 Public Works
- 10 2026 Street Sweeping Schedule
- 11 Resources and Assistance
- 12 The Department of Water and Sewer Resources
- 13 The Bethlehem Environmental Advisory Council
- 14 Now Arriving: Real-time Parking Occupancy Signs!
- 14 Click. Check. Park. Introducing Our Real-time Parking Webpage!
- 16 2026 Spring Yard Waste Curbside Pickup Schedule
- 17 2026 Holiday Curbside Recycling Collection Schedule
- 17 Theis/Cornfeld Recycling Center
- 17 Yard Waste Drop Off
- 18 Recreation Programs and Events, Spring/Summer 2026
- 20 Bethlehem Area Public Library
- 21 Northside Alive
- 22 City of Bethlehem Taxes
- 23 Bethlehem Area School District
- 24 Bethlehem Rose Garden
- 24 The Bethlehem Fine Arts Commission Events
- 25 America 250: A Bethlehem Block Party
- 26 Southside Arts District Spring & Summer Events
- 27 Bethlehem Chamber Upcoming Events

As a requirement of the Municipal Waste Planning Recycling and Waste Reduction Act, the City of Bethlehem is required to notify residents of our recycling programs twice a year. Please enjoy this newsletter and then place it in your recycling container. Or better yet, pass it along for someone else to learn about all the good things that are happening in the City of Bethlehem.

City of Bethlehem Directory

Bethlehem Service Center 610-865-7000
Available for non-emergencies, 24 hours a day, 7 days a week, 365 days a year.

- EMS/Fire/Police Emergency 911
- Payment Center 610-865-7046
- Health Department 610-865-7083
- Water and Sewer 610-865-7070
- Public Works 610-865-7050
- Recycling Department 610-865-7082
- Pothole Hotline 610-865-7053
- Graffiti Hotline 610-865-7065
- Community and Economic Development 610-865-7085
- Planning/Zoning 610-865-7088
- Construction/Permits/Codes/Inspections 610-865-7091
- Recreation Department 610-865-7080



10 East Church Street, Bethlehem, PA 18018
Lobby Hours: 8 am – 4:30 pm, Monday – Friday
bethlehem-pa.gov

Email Alerts

Register to receive emails of critical City updates, news and alerts at bethlehem-pa.gov. Click "Online Services," then "Sign Up for City Alerts."

Follow Us on Social Media

Stay up to date on current events and announcements:

-  City of Bethlehem
-  [cityofbethlehempa](https://www.instagram.com/cityofbethlehempa)

Bethlehem Mayor

J. William Reynolds

City Council Members

Rachel Leon, *President of Council*
Colleen S. Laird, *Vice President of Council*
Justin K. Amann Bryan G. Callahan Michael G. Colón
Jo C. Daniels Hillary Kwiatek
Contact your Council Member directly through the Council webpage at www.bethlehem-pa.gov/.

2026 City Council Meeting Dates

All Council Meetings begin at 7 pm unless otherwise specified.

- May 5 & 20* • August 4** & 18 • November 4° & 17
- June 2 & 16 • September 1 & 15 • December 1 & 15
- July 7 & 21 • October 6 & 20

*Wednesday, May 20, due to Reorganizational Meeting

**Tuesday, August 4, earlier time due to Musikfest

°Wednesday, November 4, due to November 3 General Election Day

Are you interested in supporting your community?

Please email marketing@ksand.com for more information on how your ad can be featured in Bethlehem's magazine. This publication reaches over 32,000 addresses and is a great way to promote your business.

women are at the center of everything we do.

Women are the backbone of our community – their health and well-being strengthen families, workplaces and everyone around them. Yet for far too long, women's health care has been fragmented, inconvenient or simply not designed for the realities of their lives.

That changes now.

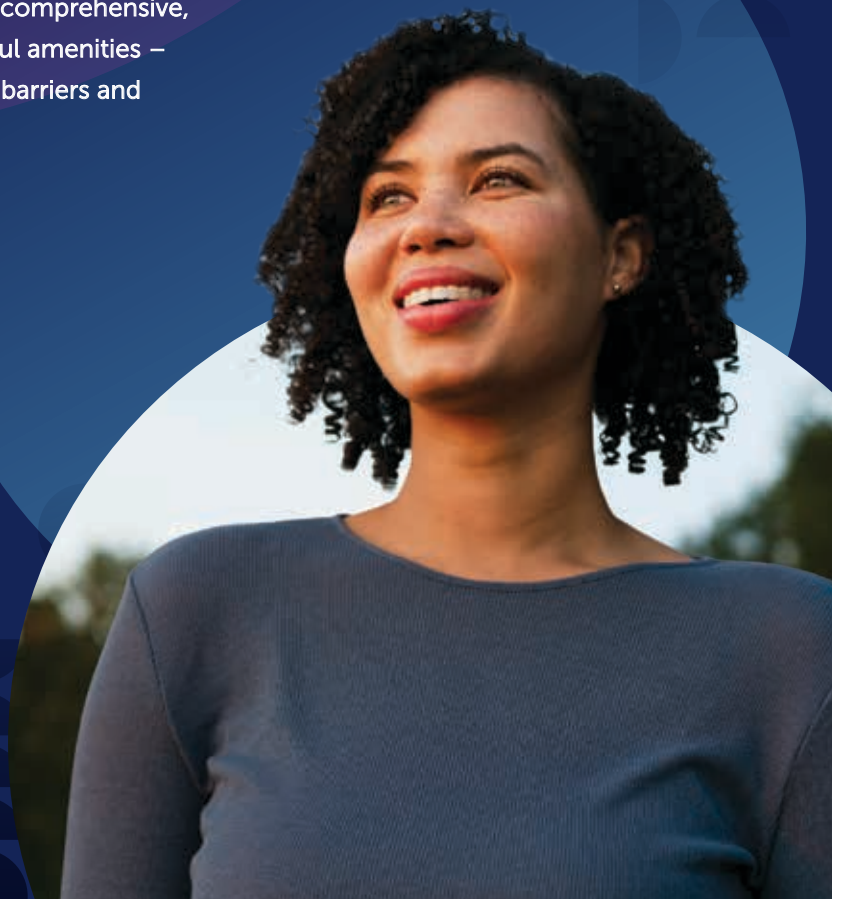
A first-of-its-kind in the region, Women's Health Center at Tower Place is redefining women's health care by bringing comprehensive, specialized care under one roof with thoughtful amenities – like a café and on-site child care – to remove barriers and help you prioritize ... you.

Put your health first.

Women's Health Center at Tower Place
1420 Eighth Ave., Bethlehem
LVHN.org/WHC



part of  Jefferson Health



Mayor's Address to the City of Bethlehem

J. William Reynolds



“What is the first thing we do with the ball?”

Our 2-year-old, Leo, loves basketballs. When I ask him that question, he usually passes the ball to someone new. A small, but meaningful reminder that strong communities are built through shared opportunity and connection.

That lesson is reflected in the work we are advancing across Bethlehem.

Our city's long-standing financial strength did not happen by chance. It is the result of disciplined governance, responsible budgeting and commitment to long-term stability. Bethlehem's history of financial success has positioned us to make strategic investments today—supporting services, infrastructure and initiatives that benefit residents across every neighborhood.

A key driver of that success continues to be private-sector growth. Across Bethlehem, we are seeing sustained investment from entrepreneurs, developers and established companies. Business owners are choosing to start and grow here because of our location, our workforce and our commitment to partnership. These investments are not abstract—they translate directly into jobs, expanded services and increased economic activity.

At the center of this growth are our local business owners. They represent the practical reality of the American Dream: individuals and families who take risks, build enterprises and contribute to the broader economic health of our city. Supporting them through thoughtful policies, streamlined processes and targeted economic development initiatives remains a priority.

However, economic growth must be matched with access. That is why housing remains a central focus of our administration with the “Opening Doors” Housing Affordability strategy. We must ensure that Bethlehem remains a place where people at all income levels can live and thrive. The plan requires coordinated action—preserving existing housing, encouraging new development and addressing affordability challenges. A balanced housing strategy is essential not only for equity, but for sustaining workforce growth and economic vitality.

We are also investing in the infrastructure that supports strong communities. Initiatives, such as “Northside Alive,” focus on small business corridors and neighborhood identity. The “SouthSide Tomorrow” partnership includes the feasibility study for a new

community center, South Bethlehem investments, and reflects a broader commitment to public spaces that foster connection, recreation, and opportunity. These investments and the launching of the City's first formal “Equity Plan” are designed to serve residents of all ages, strengthen neighborhood ties, and provide access to programs and resources that enhance quality of life.

Our long-term vision is further guided by initiatives like the 40-in-10 plan, which defines a long-term improvement plan for all city parks, ensuring resources are distributed and improved across the entire City over the next decade. This work is grounded in collaboration—aligning efforts across the public sector, private industry and community stakeholders to ensure measurable progress.

At the same time, Bethlehem's growth is rooted in its identity. Our ongoing efforts related to World Heritage recognition, along with our cultural connections to communities such as Sister City Patillas, Puerto Rico, reflect a commitment to preserving and elevating the history that defines us. These initiatives strengthen tourism, support local businesses, and reinforce Bethlehem's position on a global stage while honoring our local heritage.

The balance between growth and preservation, between opportunity and access, requires intentional leadership and community partnership. It also requires a shared understanding that progress is most meaningful when it is inclusive.

That principle is evident across Bethlehem every day. Residents, organizations and institutions are working together to expand opportunities, support one another and contribute to a stronger city. Whether through small businesses, neighborhood initiatives or regional collaboration, there is a clear recognition that success is not limited—it is built collectively.

As we look ahead, our focus remains clear: maintaining financial stability, supporting business growth, expanding housing access, investing in community infrastructure and advancing long-term strategic goals. These priorities are interconnected, and each plays a role in ensuring that Bethlehem continues to thrive.

Leo recently came home from the park disappointed that no one was there to play with. A few minutes later, he grabbed his ball and went back out, ready to find someone new.

That instinct—to seek connection, to share opportunity, to build something together—is what drives our work as a City.

It is how we strengthen our community, and it is how we will continue moving Bethlehem forward.



On January 23, Mayor Reynolds attended a ribbon cutting for the Coalition for Appropriate Transportation (CAT), celebrating the new location of a CAT Bicycle Cooperative on Walnut Street.



On April 8, Mayor Reynolds invited students from the Bethlehem Area School District to speak at the 2026 State of the City Address held at SteelStacks.

COUNCIL PRESIDENT'S REPORT

The year 2025 marked Bethlehem's first full year on the UNESCO World Heritage stage. A September 6 community celebration was held on and around Payrow Plaza to commemorate the Inscription and Bethlehem's contributions as part of the transnational Moravian Church Settlements site.

City Council was pleased to enthusiastically support this celebration as well as the efforts leading to Bethlehem's inclusion on this prestigious list of world landmarks. Council also continues to support its partnership in this venture with the City providing the site coordinator and contributing toward the salary of the site manager. The World Heritage distinction brings recognition, honor and many visitors to Bethlehem to see all that makes our City special.

Last year also saw the fruits of labor paying off as approved plans and signed contracts led to a redeveloped Walnut Street Garage re-opening in late November. The 517-spot, \$27 million project was completed on time to welcome Christmas shoppers...as promised.

And more was set in motion in 2025 for the coming year and beyond. These actions took place during 24 regular Council meetings and 11 Committee meetings. In addition, Council conducted 20 hours of budget hearings spread over four nights. The year's body of work led to passage

of 57 ordinances and 188 resolutions. Key action included review leading to the first major revision of the Subdivision and Land Development Ordinance in 50 years.

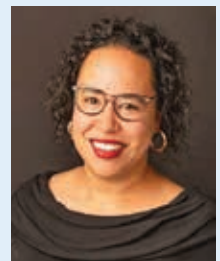
Some of Council's other actions contributed to the closing of the Greenway Trail Gap and significant improvements to the Monocacy Trail. Council also has been pleased to authorize grant applications and contracts leading to the near completion of a revitalized Friendship Park. Meanwhile, plans progress to improve all City parks within the next 10 years through the 40-in-10 plan. Similarly, Council enthusiastically supports the Complete Streets Plan as it aims to make our City thoroughfares safer and more welcoming to all — motorists, pedestrians and cyclists alike. This plan will integrate a redevelopment of Broad Street beginning in 2026, converting this area to a safer and more appealing corridor.

On the subject of redeveloped streets, Council also has been eager to authorize the redesign of Linden Street to restore two-way traffic flow. This effort began in March and is expected to wrap up in fall. Plans to do much the same with Center Street are not far behind.

Council also has been committed to supporting efforts to improve affordable housing and combat homelessness. Some of these projects include the Gateway on 4th, plans for a new Bethlehem Emergency Shelter, and the redevelopment of Pembroke



Michael G. Colón



Rachel Leon

Village. Funding was sparked by community recovery money from the pandemic a few years ago, and progress continues as various aspects reach milestones toward completion.

Finally, as we near the end of this, our last meeting together as a Council, I wish to thank Ms. Crampsie Smith and Ms. Wilhelm for their many contributions. I also want to welcome Mr. Amann and Ms. Daniels to the new Council as we look forward to what they have to offer. Also, after four years, I'll pass the gavel to a new president, Rachel Leon. My term as this body's leader has expired, but my Council term will continue. It was a pleasure to serve you as a Council as well as the residents of the City of Bethlehem. My role may change a bit and I will be seated slightly to my left, but my commitment to do what is right for the betterment of this City will not.

Thank you to all for the opportunity.

Sincerely,

Michael G. Colón

CITY COUNCIL REPORT

Rachel Leon accepted the gavel on January 5 to become the new City Council president. In doing so, she became the second female Council president in the City's history.

One of Ms. Leon's key initiatives has been to announce a President's Hour. Her intention is to offer an informal setting for residents to discuss with her their City-related concerns. Specifically, these sessions will improve communication, eliminate public speaking inhibitions and streamline the opportunity to be heard. The President's Hour will be held in the hallway of the Rotunda an hour before most regular Council meetings. No appointment is necessary.

Ms. Leon on January 5 was sworn in to serve her second four-year Council term. A lifelong South Side resident, she attended Donegan Elementary School, Broughal Middle School and Freedom High School. She also is a Northampton Community College graduate and served in the U.S. Navy for nine years. Her primary goals as president are to promote transparency, foster communication and focus on providing quality city services.

Additionally on January 5, Council elected Colleen Laird as Vice President. Ms. Laird is entering her third year on Council. Council also that evening welcomed two new members to its chambers: Justin Amann and Jo C. Daniels.

One of Ms. Leon's key initiatives has been to announce a President's Hour, an informal setting for residents to discuss with her their City-related concerns.



Colleen Laird



Justin Amann



Jo C. Daniels

CORRECTION

We regret that an aerial photograph of the City of Bethlehem was previously published in the Fall 2025 City of Bethlehem magazine on page 10 without proper attribution. The photograph is by Dana B. Grubb.



BETHLEHEM FIRE DEPARTMENT



The Bethlehem Fire Department responds to a wide variety of emergencies throughout the City of Bethlehem. Ensuring the safety of our residents and visitors is our top priority.

OIL TANK REMOVAL

The City of Bethlehem Fire Department has seen an increase in the number of homes and businesses that are removing their fuel oil tanks. With this have come challenges that we want to make you aware of to prevent you from having a negative or unsafe experience.



The City of Bethlehem requires that the building owner or contractor hired to remove an oil tank within the City of Bethlehem acquire a permit to perform the removal of the tank. The contractor is required to operate and abide by all rules, regulations and codes outlined in the permit process.

Once the permit is approved, paid for and picked up, the job will be scheduled and a fire inspector from the City of Bethlehem Fire Department will schedule a date and time for the tank removal. A Fire Inspector must be on site to confirm that safe and proper procedures are followed to limit the risk from fire or contamination to your residence or to the environment.

Recently, we have seen cases where homeowners have hired inexperienced contractors who did not obtain the necessary permit or have the proper equipment to do the job. Several of these cases resulted in the fire department responding to the residence for spills in the home or into drains causing damage to the home and waterways. This has also led to costly hazardous materials cleaning and remediation costs for the homeowners.

If you have any questions regarding the oil tank removal process in the City of Bethlehem, please call the City of Bethlehem Fire Department of Fire Inspection at 610-865-7143.

RECRUITS IN TRAINING

We are excited to announce that eight firefighter recruits started the Allentown Fire Academy on January 20 and will graduate on June 19, 2026. Upon graduation, they will be assigned to one of our fire suppression platoons. In the academy, they will become Emergency Medical Technicians, as well as become certified in firefighting, hazardous materials, vehicle rescue, rope and high angle rescue, and several other areas.



Row 1, L-R: Sandor Paar, Jr; Brandon Shanley; Ryan Cooney and Kyle Pocheck. Row 2, L-R: Jason Peter; Collin Seip; Nick Wassa and Jason Spiegelman.



FASTSIGNS ALLENTOWN

Your one stop shop for all things signs and graphics related.

610-434-7353 219@fastsigns.com

Covering Eastern PA and NJ



SERVING THE LEHIGH VALLEY AND BEYOND FOR OVER 40 YEARS

RESIDENTIAL | COMMERCIAL | LAND DEVELOPMENT | AUCTION SERVICES

WE ARE READY AND EAGER TO SERVE ALL YOUR REAL ESTATE NEEDS.

610-821-1212 | SettonRealty.com

BETHLEHEM POLICE DEPARTMENT



The Police Department's goal is simple: to make Bethlehem a safe place for citizens to raise and nurture a family and for our business community to prosper.

THE CITY OF BETHLEHEM POLICE DEPARTMENT MOUNTED UNIT IS TRAINING FOR SEARCH AND RESCUE OPERATIONS USING PROJECT LIFESAVER TECHNOLOGY.

Project Lifesaver helps locate individuals at risk of wandering due to Alzheimer's, dementia, autism, or other cognitive conditions. Specially trained officers use a tracking signal to conduct fast, focused searches—often making the difference in a safe return home.

Mounted officers and their horses provide a unique advantage in wooded and hard-to-reach areas, combining tradition, teamwork and modern technology to better serve our community.

Learn more about Project Lifesaver in Bethlehem at <https://project-lifesaver-bethlehem-pa.hub.arcgis.com/>.



BETHLEHEM SERVICE CENTER

The Bethlehem Service Center (BSC) is available for residents to contact for non-emergencies 24 hours a day, seven days a week, 365 days a year.

There are four ways to contact the BSC for non-emergencies.

Remember, in the event of any type of emergency, DIAL 911.



The BSC app is **FREE** to download. Open your phone's camera and point at the QR code!

- 1. Call 610-865-7000.** This number can be reached by house phone line or by cell phone. This will dial directly into the BSC for non-emergency questions/City inquiries or City services.
- 2. Bethlehem Service Center App:** The app is available to download for most cell phones and tablets on either the Play Store or the App Store on your device. Search for "Bethlehem Service Center" or "City of Bethlehem" under Apps, or scan the QR code to the left. Access key information at your fingertips with this easy-to-use mobile application. Receive emergency notifications, submit a service request, find out what to do in Bethlehem, find parking, view bus schedules, pay your bills and much more.
- 3. Email:** The BSC can also be reached via email at: bethlehemservicecenter@bethlehem-pa.gov.
- 4. City of Bethlehem Web Page and Portal:** Visit bethlehem-pa.gov, click "Online Services" in the main menu, then click "Report a Concern." Under number 4 click "Service Request Portal" to submit a service request.

Examples of "non-emergency" customer service: dirty water, potholes that need to be repaired, debris in the street, recycling issues, etc. The BSC will also provide assistance to any City of Bethlehem residents who may have questions or concerns that need to be addressed.

The 40-in-10: Bethlehem Parks & Recreation Plan

After a year full of community meetings, pop-ups and incredible conversations with residents and stakeholders, the 40-in-10: Bethlehem Parks & Recreation Plan is officially complete! Special thanks to the many individuals who were a part of this community-driven plan.

This plan outlines how the City will improve its 40+ parks over the next 10 years to ensure equitable access to amenities for people of all ages and abilities. Recommendations include physical changes as well as programming and maintenance/staffing needs throughout Bethlehem's neighborhoods.

The City's April kickoff event marked the official launch of the plan and announced which parks will be in focus for 2026:

- Bernie Fritz Park
- Clearview Park
- Madison Park

While the City shifts from planning to implementing, the community will continue to be involved every step of the way.

Want to stay in the loop and help shape the future of Bethlehem's parks? Follow We Build Bethlehem at <https://webuild.bethlehem-pa.gov> for upcoming engagement opportunities, project updates and announcements!

Complete Streets / Calles Completas

Can you envision a future where streets are designed for people, not just for cars? To make this vision a reality, the City of Bethlehem is creating a Complete Streets Plan to make our roads safer, more comfortable and more accessible for everyone, whether you walk, bike, take the bus or drive.

In order to achieve this vision, this plan will:

- Identify challenges with getting around Bethlehem through different transportation modes (walking, bicycling, taking the bus, driving).
- Set policies that will guide the improvement of streets.
- Make recommendations for where and how to build infrastructure to improve safety and access for all transportation modes.

WANT TO GET INVOLVED AND MAKE YOUR VOICE HEARD?

Attend our Public Workshop on Thursday, June 18, from 6 – 8 pm at NCC Fowler Family Southside Center, 511 E. 3rd St., Room 605, Bethlehem, PA 18015, to learn more about the project and talk with City staff.

Follow the project on We Build Bethlehem at <https://webuild.bethlehem-pa.gov> for future updates on events. Resources are available in both English and Spanish.



Savings in Full Bloom

Take advantage of our latest special offers!

 **UNITY BANK**

Scan code to visit unitybank.com/specials and learn more



 EQUAL HOUSING LENDER | MEMBER FDIC | UNITY BANK NMLS #617337

PROTECT YOUR HOME FROM RADON

FREE TESTING AND MITIGATION ASSISTANCE

Did you know that radon is the second leading cause of lung cancer—and the number one cause among non-smokers? Radon is a natural gas that can build up inside homes, especially in basements and lower levels. Because radon has no smell, color or taste, the only way to know if it's in your home is to test.

The Bethlehem Health Bureau offers help through our Lead & Healthy Homes Program, funded by federal grants from the U.S. Department of Housing and Urban Development (HUD).

Qualified tenants or homeowners can receive free radon testing and, when needed, installation of a radon system to reduce radon levels and improve indoor air quality.

In addition to radon testing and mitigation, the Lead & Healthy Homes Program also tests for and addresses lead-based paint hazards and other home safety concerns.

Radon can enter your home in many ways: www.epa.gov/radon

- Cracks in solid floors
- Construction joints
- Cracks in walls
- Gaps in suspended floors
- Gaps around service pipes
- Cavities inside walls
- The water supply



RADON TEST KITS AVAILABLE

For households that may not qualify based on income, the Bethlehem Health Bureau has a limited supply of free radon test kits available.

Test kits are offered on a first-come, first-served basis while supplies last.

QUESTIONS OR NEED A TEST KIT?

Contact the Bethlehem Health Bureau by calling **610-865-7083** or emailing HealthyHomes@bethlehem-pa.gov.

LEARN MORE AND APPLY

EPA Radon Info and Facts:

Scan the QR code to learn more about radon.

Lead & Healthy Homes Application:

Scan the QR code to see if you qualify!



**Residential
Commercial
Industrial**

From Your SMALLEST to Your LARGEST Needs!

Conveniently located in the Heart of the Lehigh Valley

Transfer Station Open to the Public
Container Service • Trash Removal
Competitively Priced

610-759-6398

EastPennSanitation.com

Serving Lehigh & Northampton Counties



Linden Street Two-Way Conversion

Originally two-way roads, Linden and Center streets were changed to one-way traffic in order to facilitate intense traffic flows to and from the Bethlehem Steel plant during shift changes. They remain this way today, but not for long as this unique traffic pattern is no longer needed. Linden Street will soon be reverted back into a two-way road. This will naturally calm traffic, increase accessibility to businesses on the corridor, and create a safer and more walkable corridor. Additionally, residents and visitors alike can look forward to upgraded ADA ramps, high visibility crosswalks and a repaved road within the project area.

The City of Bethlehem secured \$1.8 million in state funding to support the project, and work is expected to start in the late fall of 2026. The Linden Street conversion will span from Fairview Street to Church Street.

As construction approaches, be on the lookout for posted signage to alert you to any road closures or detours. We will do our best to phase the work so there is as little impact to the public as possible. Additionally, we will communicate project impacts to the public.

Find out more about current projects and the Complete Streets Plan at www.bethlehem-pa.gov/public-works and share your feedback at <https://webuild.bethlehem-pa.gov>.



**A SMALLER BUILDING,
A BIGGER MISSION**

We are reimagining our campus so we can expand our impact—
living out Christ’s call to
love and serve.

2344 Center Street | Bethlehem | 610-867-5865
fpc-bethlehem.org | Facebook:@firstpresbethlehem

2026 STREET SWEEPING SCHEDULE

The Department of Public Works would like to announce that the Bureau of Streets began its street sweeping program on April 1, and it will run through October 31. During this time frame, street sweeping activities will operate every Tuesday through Friday between 7:30 am and 2 pm on the posted roads throughout the City limits. The regularly scheduled street sweeping routes that are main thoroughfares in the City are posted with “No Parking” signs alerting motorists of parking restrictions for a given day and time. Vehicles must be kept off these posted streets to allow for effective street cleaning.

The City is divided into 88 sweeping districts that are not posted. The City tries to deploy three sweepers each day to run through these areas. Roads that are under 12 feet wide do not get swept.

For a full route schedule, visit bethlehem-pa.gov/public-works and click on the “Street Sweeping Schedule” button.

Gray Indicates Sweeper Schedule for 1st and 3rd Thursdays and Fridays

Yellow Indicates Sweeper Schedule for 2nd and 4th Thursdays and Fridays

APRIL 2026						
S	M	T	W	T	F	S
			1	2	3	4
5	6	7	8	9	10	11
12	13	14	15	16	17	18
19	20	21	22	23	24	25
26	27	28	29	30		

MAY 2026						
S	M	T	W	T	F	S
					1	2
3	4	5	6	7	8	9
10	11	12	13	14	15	16
17	18	19	20	21	22	23
24	25	26	27	28	29	30
31						

JUNE 2026						
S	M	T	W	T	F	S
	1	2	3	4	5	6
7	8	9	10	11	12	13
14	15	16	17	18	19	20
21	22	23	24	25	26	27
28	29	30				

JULY 2026						
S	M	T	W	T	F	S
			1	2	3	4
5	6	7	8	9	10	11
12	13	14	15	16	17	18
19	20	21	22	23	24	25
26	27	28	29	30	31	

AUGUST 2026						
S	M	T	W	T	F	S
						1
2	3	4	5	6	7	8
9	10	11	12	13	14	15
16	17	18	19	20	21	22
23	24	25	26	27	28	29
30	31					

SEPTEMBER 2026						
S	M	T	W	T	F	S
		1	2	3	4	5
6	7	8	9	10	11	12
13	14	15	16	17	18	19
20	21	22	23	24	25	26
27	28	29	30			

OCTOBER 2026						
S	M	T	W	T	F	S
				1	2	3
4	5	6	7	8	9	10
11	12	13	14	15	16	17
18	19	20	21	22	23	24
25	26	27	28	29	30	31

NOVEMBER 2026						
S	M	T	W	T	F	S
1	2	3	4	5	6	7
8	9	10	11	12	13	14
15	16	17	18	19	20	21
22	23	24	25	26	27	28
29	30					

DECEMBER 2026						
S	M	T	W	T	F	S
		1	2	3	4	5
6	7	8	9	10	11	12
13	14	15	16	17	18	19
20	21	22	23	24	25	26
27	28	29	30	31		

RESOURCES AND ASSISTANCE

FOR CITY OF BETHLEHEM
RESIDENTS



FOR ASSISTANCE, DIAL 2-1-1

IN CASE OF EMERGENCY, DIAL 9-1-1

NEED EMERGENCY SHELTER?

- Bethlehem Emergency 484-379-6694
- New Bethany Ministries 610-691-5602
- Victory House of Lehigh Valley 610-691-3373

NEED HELP WITH RENTAL PAYMENTS OR HOUSING ASSISTANCE?

- American Red Cross (*Disaster Assistance*) 610-865-4400
- Bethlehem Emergency Services (*General*) 610-865-7118
- Salvation Army (*Rental/Housing Assistance*) 610-867-4681
- Turning Point (*Rental/Housing Assistance*)
Domestic Abuse Hotline 610-437-3369
- Victory House of Lehigh Valley
(*Housing Assistance*) 610-691-3373
- New Bethany Ministries
(*Rental/Housing Assistance*) 610-691-5602 (option 3)
- Community Action Lehigh Valley
(*Rental/Housing Assistance*) 610-691-5620
- Bethlehem Housing Authority
(*Rental/Housing Assistance*) 610-865-8300
- Northampton County Housing Authority
(*Rental/Housing Assistance*) 610-759-8488

NEED LEGAL ASSISTANCE WITH HOUSING?

- North Penn Legal Services 610-317-8757

NEED PUBLIC TRANSPORTATION?

- LANTA/Metro 610-776-7433
- LANTaVan 610-432-3200

NEED HELP PAYING BILLS?

First Energy

- Repair/Customer Service 1-800-545-7741
- First Energy WARM Program 1-888-282-6816

PPL

- Repair/Customer Service 1-800-342-5775
- PPL WRAP Program 1-888-232-6302

UGI

- Emergencies 1-800-276-2722
- General Office 1-800-276-2722
- UGI WARM Program 1-800-844-9276

Electric

- Community Action Committee of the Lehigh Valley
(PPL Bill) 610-691-5620

Gas

- Lehigh County Energy Assistance
(LIHEAP Program) 610-821-6509
- Northampton County Energy Assistance
(LIHEAP Program) 610-250-1785
- Salvation Army (UGI Operation Share Program) 610-432-0129
..... 610-867-4681

City Water/Sewer Customer Service 610-865-7070

Water/Sewer Off Hours 610-865-7077

For more information on housing, visit bethlehem-pa.gov/Community-Economic-Development/Community-Development/Housing or scan the QR code.



2026 BETHLEHEM STAR



From
**JOY TO THE
WORLD®**
(Made in Poland)

BETHLEHEM CHRISTMAS SHOPPE AND

**HAND CUT
CRYSTAL**

*Celebrating Life, Liberty and the Pursuit of Happiness
for America's 250th Anniversary!*

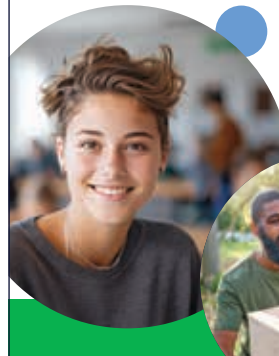
PREORDER YOURS TODAY!

452 Main Street, Historic Bethlehem
610-868-2427 • BethlehemChristmasShoppe.com

B1st

Bethlehem 1st
Federal Credit Union

Bethlehem 1st serves 44 groups including employees of the City of Bethlehem, Bethlehem Area School District, Lehigh University and Moravian University. We also have several student groups!



A full list of eligible groups can be found on our website.

beth1st.org

Stormwater Pollution Prevention Begins With You!



Stormwater runoff is one of the leading causes of water pollution in the United States. Stormwater will pick up dirt, trash, oil, grease, chemicals and any other pollutant as it flows over roads and lawns. This water generally re-enters the water cycle without being treated. Because the City of Bethlehem receives an average of 50 inches of rainfall a year, stormwater quality is a serious concern. Polluted runoff is the nation's greatest threat to clean water. The practice of healthy household habits by homeowners can keep common pollutants off the ground and out of our stormwater.

In the City of Bethlehem, stormwater runoff does not go to a water treatment plant before entering our recreational or drinking waters. It is transported by drains, streets, gutters, curbs and open channels directly into retention/infiltration basins, parks, washes and canals.

Common stormwater pollutants include sediments (dirt); motor oil, fuel, grease and other fluids; pesticides and herbicides; heavy metals; yard waste (leaves and grass); pet waste; paints and solvents; and litter.

HOW CAN YOU HELP?

■ Your Yard

- Select native plants that are drought tolerant and pest resistant.
- Don't over water.
- Use lawn products sparingly and follow the manufacturer's application instructions.
- Never apply fertilizers, pesticides or herbicides just before, during or immediately after a storm.
- Sweep up landscape waste with a broom instead of using a hose or blower.
- Control loose dirt to prevent soils from washing into the storm drain.
- Properly dispose of pool water. Do not backwash or drain your pool into the street.

■ Your Vehicle

- Wash your vehicle at a commercial car wash to prevent dirty, soapy water from entering the storm drain.
- Keep your vehicle "leak free." Clean up any leaks with absorbent and dispose of it properly.
- Recycle used motor oil and antifreeze at participating auto parts stores or service facilities.

■ Your Home or Business

- Purchase non-toxic products.
- Store home maintenance products inside or under cover.
- Properly dispose of household hazardous waste.

■ Your Pets

- Pet waste can be a source of pollution in water bodies and retention basins.
- Collect waste when walking your pet.

LEARN MORE

For more information, visit www.bethlehem-pa.gov/Public-Works/Stormwater.



245 East Broad Street
Bethlehem, PA 18018

610-868-8531

ConnellFuneral.com

Thank you for allowing us to serve in the city we love since 1919!

Co-Presidents: Matthew P. Connell and James M. Connell, Jr.
Supervisor: John E. Connell



PROTECTING OUR CITY'S ENVIRONMENT

The purpose of the Bethlehem Environmental Advisory Council (EAC) is to advise City Council and the Administration on environmental issues within the City of Bethlehem. We promote the City's Climate Action Plan and recommend courses of action to protect the health, safety and welfare of Bethlehem residents, encouraging sustainable design and the use of renewable energy to protect and preserve natural resources within the City of Bethlehem.

The EAC needs help from City residents with a passion for protecting our environment. Please consider joining us at one of our monthly meetings or as a volunteer to help with our projects.

Some of our projects for 2026 include:

- Educating homeowners on the benefits of solar and facilitating implementations;
- Reducing the use of plastic;
- Protecting and increasing the trees in the community;
- Reducing waste, including food waste, in our community;
- Improving pedestrian and bike use in the City;
- Promoting land-use strategies to minimize climate change; and
- Improving EV charging infrastructure.

Our meetings are typically on the first Thursday of each month at 7 pm. The meetings are hybrid, held both online and at Northampton Community College, Fowler Family Southside Center (511 E. 3rd St., Room 106). Visit www.bethlehemeac.org/ for more information.

GRUPO NICHE - JULY 30

RUSSELL DICKERSON - JULY 31

JOHN MULANEY - AUGUST 1

THIRD EYE BLIND - AUGUST 2

TRAIN - AUGUST 3

"WEIRD AL" YANKOVIC - AUGUST 4

T.I. & DaBABY - AUGUST 5

BAILEY ZIMMERMAN - AUGUST 6

PARKER McCOLLUM - AUGUST 7

YELLOWCARD & TAKING BACK SUNDAY - AUGUST 8

AJR - AUGUST 9

**MUSIK
FEST
2026**

*Wind Creek
Steel Stage
at PNC Plaza*



THE HISTORY OF ARBOR DAY

Arbor Day is an important part of the City of Bethlehem's green initiatives and recognition as a Tree City USA by the National Arbor Day Foundation.

Arbor Day first began in 1872 in Nebraska by J. Sterling Morton and is now known as America's National Tree Holiday. This first observance saw millions of trees planted and this custom spread rapidly to the point where it is now observed in all states on the last Friday of April every year. In the City of Bethlehem, we celebrate by handing out seedlings to residents at City Hall and planting trees in our parks and at local schools. Each year, we partner with a City of Bethlehem school to teach the students about the importance of trees and how to plant them and care for them.

Though we may not be planting millions of trees like they did on that first Arbor Day, just planting one tree can make a difference. Just one tree planted by each resident would have a significant impact by adding to the tree canopy and helping the future be a greener one. Not only that, but trees help with purifying the air, mitigating climate change, regulating urban temperatures and managing runoff. Consider planting a tree today!

More information can be found on the City of Bethlehem's Urban Forestry page at www.bethlehem-pa.gov/Public-Works/Bureaus/Urban-Forestry.

NOW ARRIVING: REAL-TIME PARKING OCCUPANCY SIGNS!

Our new real-time parking occupancy signs are here to take the guesswork out of finding a space downtown. These digital signs show you how many spots are available in participating garages *before* you turn in, saving you time, fuel and frustration.

With this information, you'll know exactly where to go. Fewer laps around the block means less congestion, cleaner air and a smoother experience for everyone. Whether you're heading to dinner, shopping or attending an event, just look for the occupancy signs and follow the numbers. Parking just got smarter and a whole lot easier.



Scan the QR code to visit the real-time parking webpage.

CLICK. CHECK. PARK. Introducing Our Real-time Parking Webpage!

Planning ahead just got easier.

We've launched a dedicated real-time parking webpage where you can check space availability before you even leave home. See which lots and garages have open spots in real time, right from your phone, tablet or computer.

Heading downtown for lunch? Checking availability before an event? Meeting friends for coffee? A quick visit to the parking webpage lets you plan your arrival with confidence.

Smart parking is just a click away! It's simple:

- Visit www.bethpark.org/parking/parking-availability-map/.
- View live occupancy updates.
- Head straight to an available location.
- Less circling. Less waiting. More doing.



www.bethpark.org/parking/parking-availability-map/

Your source for
SUMMER FUN

B&B
CUSTOM POOLS

PA000981 // NJ13VH04418500

610.965.POOL • BBCUSTOMPOOLS.COM

DESIGN, INSTALLATION, SERVICE & RENOVATION, PATIOS, OUTDOOR KITCHENS, FIREPLACES & MORE

Who's 2025
Who
IN BUSINESS
Lehigh Valley

E.F. Butz Agency

For All of Your Insurance Needs

Servicing the Lehigh Valley and surrounding areas since 1946

HOME | LIFE | AUTO | COMMERCIAL

3333 W Emmaus Avenue | Emmaus | 610 965-2824

efbutzins.com | efbutzins@rcn.com

ON-SITE CREMATORY AT OUR LINDEN STREET LOCATION



A lifetime of memories, a lifetime of service.



Serving the Lehigh Valley for Generations

Cantelmi Long Funeral Home

500 Linden St., Bethlehem, PA 18018

610-866-8059

Dino P. Cantelmi, Supervisor

Cantelmi Funeral Home, PC

1311 Broadway, Fountain Hill, PA 18015

610-866-2323

Justin A. Keiper, Supervisor

CANTELMIFUNERALHOME.COM



LEARN MORE ABOUT
Bethlehem, PA!




-  bethlehem-pa.gov
-  [City of Bethlehem](#)
-  [cityofbethlehempa](#)



Photo credit: Craig Roberts

2026 SPRING YARD WASTE CURBSIDE PICKUP SCHEDULE

JUNE 1 – 12, 2026	
RECYCLING PICKUP DAY	YARD WASTE PICKUP DAY
June 1, 2026	June 1, 2026
June 2, 2026	June 2, 2026
June 3, 2026	June 3, 2026
June 4, 2026	June 4, 2026
June 5, 2026	June 5, 2026
June 8, 2026	June 8, 2026
June 9, 2026	June 9, 2026
June 10, 2026	June 10, 2026
June 11, 2026	June 11, 2026
June 12, 2026	June 12, 2026

HERE ARE THE REQUIREMENTS:

- All materials must be placed **CURBSIDE** the night before your collection day.
- Only ONE pass-thru will be made for each street.
- All items must be in either **BROWN PAPER BAGS**, rigid containers of less than 30 gallons or bundled with string (no tape or rope).
- No items over 4 inches in diameter or 4 feet in length.
- Any materials in plastic bags will not be picked up.

Materials accepted: Leaves; small brush; hedge and shrub trimmings; and Christmas trees free of tinsel, decorations and lights. Christmas trees must not be in plastic bags.

Materials NOT accepted: Grass; hay; straw; tree stumps; root balls; soil; dirt; sod; mulch; bamboo; ornamental grass; pumpkins; cornstalks; acceptable materials not bagged, bundled or containerized; or items exceeding length, width or weight requirements.

Our state-of-the-art crematory is located within our Historic Bethlehem main building, where your loved one never leaves our care.



Herron
*Funeral Homes
On-site Crematory*

Where your loved one never leaves our care.

458 Center at Market Streets
Bethlehem, PA 18018

1145 Lehigh Street
Allentown, PA 18103
610-866-0671

Demetrios J. Herron
Connor J. Herron
Paula C. Herron
Andrew F. Herron

2026 HOLIDAY CURBSIDE RECYCLING COLLECTION SCHEDULE

City of Bethlehem
610-865-7082



2026
Holiday
Collection
Schedule

HOLIDAY SCHEDULE

Holiday

New Year's Day	1/1
Memorial Day	5/25
Independence Day	7/4
Labor Day	9/7
Thanksgiving Day	11/26
Christmas Day	12/25

***If a holiday falls on a weekday (Monday - Friday) and it's your normal pickup day, recycling will be picked up one day later for the remainder of the week.

JANUARY 2026						
S	M	T	W	T	F	S
				1	2	3
4	5	6	7	8	9	10
11	12	13	14	15	16	17
18	19	20	21	22	23	24
25	26	27	28	29	30	31

FEBRUARY 2026						
S	M	T	W	T	F	S
1	2	3	4	5	6	7
8	9	10	11	12	13	14
15	16	17	18	19	20	21
22	23	24	25	26	27	28

MARCH 2026						
S	M	T	W	T	F	S
1	2	3	4	5	6	7
8	9	10	11	12	13	14
15	16	17	18	19	20	21
22	23	24	25	26	27	28
29	30	31				

APRIL 2026						
S	M	T	W	T	F	S
			1	2	3	4
5	6	7	8	9	10	11
12	13	14	15	16	17	18
19	20	21	22	23	24	25
26	27	28	29	30		

MAY 2026						
S	M	T	W	T	F	S
					1	2
3	4	5	6	7	8	9
10	11	12	13	14	15	16
17	18	19	20	21	22	23
24	25	26	27	28	29	30
31						

JUNE 2026						
S	M	T	W	T	F	S
	1	2	3	4	5	6
7	8	9	10	11	12	13
14	15	16	17	18	19	20
21	22	23	24	25	26	27
28	29	30				

JULY 2026						
S	M	T	W	T	F	S
			1	2	3	4
5	6	7	8	9	10	11
12	13	14	15	16	17	18
19	20	21	22	23	24	25
26	27	28	29	30	31	

AUGUST 2026						
S	M	T	W	T	F	S
						1
2	3	4	5	6	7	8
9	10	11	12	13	14	15
16	17	18	19	20	21	22
23	24	25	26	27	28	29
30	31					

SEPTEMBER 2026						
S	M	T	W	T	F	S
		1	2	3	4	5
6	7	8	9	10	11	12
13	14	15	16	17	18	19
20	21	22	23	24	25	26
27	28	29	30			

OCTOBER 2026						
S	M	T	W	T	F	S
				1	2	3
4	5	6	7	8	9	10
11	12	13	14	15	16	17
18	19	20	21	22	23	24
25	26	27	28	29	30	31

NOVEMBER 2026						
S	M	T	W	T	F	S
1	2	3	4	5	6	7
8	9	10	11	12	13	14
15	16	17	18	19	20	21
22	23	24	25	26	27	28
29	30					

DECEMBER 2026						
S	M	T	W	T	F	S
		1	2	3	4	5
6	7	8	9	10	11	12
13	14	15	16	17	18	19
20	21	22	23	24	25	26
27	28	29	30	31		

Blue Indicates "A" Weeks

White Indicates "B" Weeks

THEIS/CORNFELD RECYCLING CENTER

- 635 Illick's Mill Road
- Tuesday - Saturday, 10 am - 4 pm
- CLOSED Sunday and Monday

Materials accepted: Mixed office paper, junk mail, magazines/shiny paper, hard and soft cover books, cardboard, flat board, telephone books, scrap metals, aluminum, most appliances, plastics #1 through #7, glass bottles and jars, and cans.

Please note: We **CANNOT** accept pressurized tanks, propane tanks, dishwashers, batteries, paint cans (empty or full), electronics and plastic bags.

Please be advised of extreme temperature closings. During summer when the real feel temperature approaches 100 degrees, during winter months when the real feel temperature nears 0 or if there is lightning in the vicinity, the facility may close unexpectedly. Please plan your visits accordingly. Thank you for your patience and understanding.



YARD WASTE DROP OFF

Bethlehem Yard Waste Facility

- 1480 Schoenersville Road
- Tuesday - Saturday, 9 am - 3 pm
- CLOSED Sunday and Monday, and also during the months of December, February and March.

Materials accepted: Leaves (loose or in brown paper bags), small brush up to 4 inches diameter (no longer than 6 feet), hedge trimmings, garden plant residue, Christmas trees (free of ornaments, lights and tinsel).

Materials NOT accepted: Sod, grass clippings, tree stumps, hay/straw, plastic bags, soil/mulch, root balls, bamboo, ornamental grass.

No dumping: Dumping is illegal, and violators will be fined according to City Ordinances and PA DEP Guidelines.

Please note: All loads must be tarped when entering or exiting the facility.

Loading service: \$10 per cubic yard. Loading services end daily at 2:45 pm. Pickup trucks can no longer be self-loaded. There is a limit of three 30-gallon containers that may be self-loaded.

Please note: Materials may only be dropped off when the Center is open and operating. Only **QUALIFIED RESIDENTS** and property owners within the City of Bethlehem may drop off materials at the Yard Waste Facility. You must show a valid driver's license and compost card on every drop-off trip.



Recreation Programs and Events • Spring/Summer 2026



Stay up to date on all City programs and events, and learn more about rental facilities by visiting www.bethlehem-pa.gov/Recreation or by scanning the QR code.

FREE! Summer Playground Program

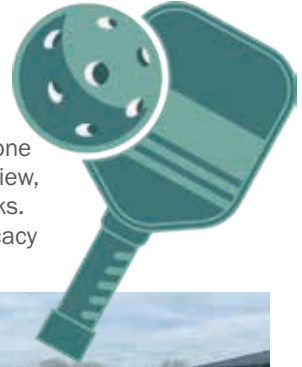
Join us for some summer fun at Yosko Park and the newly renovated Friendship Park! Our free summer park program, led by our energetic staff, will include, but is not limited to, arts and crafts, games and special visits by City departments and community organizations. The park program begins on Monday, June 15, and ends on Thursday, July 23. This year's schedule is as follows:

- **Yosko Park** (617 Atlantic St., 18015): Mondays, 6 – 8 pm
- **Friendship Park** (247 E. North St., 18018): Wednesdays, 6 – 8 pm

We encourage you to visit both park program locations this summer!

TENNIS AND PICKLEBALL

Tennis or pickleball anyone? Find a partner and play some tennis and/or pickleball at one of our courts. Tennis is available at Clearview, Monocacy, Sand Island and Westside Parks. Pickleball is available at Clearview, Monocacy and Westside Parks.



TRAILS AND LINEAR PARKS

Whether you like to walk, bike or run, we have a place for you. Visit one of our trails or linear parks.

- **Monocacy Way Trail:** Travel along the beautiful Monocacy Creek from the Industrial Quarter to the Monocacy Recreational Complex at Memorial Pool.
- **Sand Island Trail (D&L Corridor):** Travel the Delaware and Lehigh Corridor to Allentown or Easton and beyond, and experience the history of the Lehigh Canal.
- **South Bethlehem Greenway Linear Park:** Take a walk on the Southside of Bethlehem and stop by Saucon Park, the Skateplaza and play areas on the trail. In addition, enjoy the Southside Arts District displays and businesses along the way.
- **South Mountain Park:** Enjoy the trails in this beautiful park on Mountain Drive in the backyard of Lehigh University. In addition, bring a disc to play some golf while visiting the park.



OPEN VOLLEYBALL

Join us at Fairview Park on Wednesday nights starting June 17 from 6 – 8 pm for open volleyball play and instruction. All ages are welcome!



Join us at the Rose Garden, Sculpture Garden and South Bethlehem Greenway for live music from various genres.

FITNESS IN THE PARK

Come get fit with us in our parks! Starting in April, we will be offering various fitness opportunities:

- **NEW THIS YEAR:** "Trail Tuesday." Guided walks, bike rides, etc. on one of our many trails in the City.
- **NEW THIS YEAR:** "Fitness in the Garden." Various fitness classes, taught by certified instructors, will be offered at the Rose Garden.
- **Sport Clinics:** Various sports clinics (basketball, soccer, baseball, etc.) taught by trained coaches and athletes will be offered at select parks.



SWIMMING POOLS AND SPLASH PADS

The City of Bethlehem has several ways to stay cool in the summer. There are five pools in the City and two splash pads. They are Memorial, our regional pool, and Clearview, Stark, Westside and Yosko, our neighborhood pools. Our splash pads, which are free of charge, are located at Yosko Park and Friendship Park (new this year).

Parks are open daily from dawn to dusk from Memorial Day weekend to Labor Day. The pool season will begin on Saturday, June 6, this year and will end on Sunday, August 23. Season passes are available to be purchased online or in the Recreation Office at City Hall.



MOVIES IN THE PARK

Bring your blankets and chairs, and come out and enjoy a movie and some popcorn with your family and friends under the stars. Movies will begin at dusk. This year's site schedule* is as follows:

- **Thursday, June 11** @ Elmwood Park
- **Tuesday, June 23** @ The Rose Garden
- **Tuesday, July 14** @ Yosko Park
- **Tuesday, July 21** @ Bayard Park

*Please check our website for the movie title at each location.



30TH ANNUAL BERNIE FRITZ NIGHT CELEBRATION

- **Wednesday, July 29 | 6 – 8 pm**
- **Bernie Fritz Park** (Memorial Ave. in the Northeast section of the City)

Join us for a special night of food, games, dancing, face painting, arts and crafts, and more. Our 30th annual Bernie Fritz Night celebration honoring the late playground leader, teacher and coach who devoted his life to Bethlehem youth will be held Wednesday, July 29, from 6 – 8 pm at Bernie Fritz Park on Memorial Avenue.



**CUSTOM TEA PARTIES
BABY & BRIDAL SHOWERS
TEAM BUILDING
CELEBRATION OF LIFE**

We specialize in creating unique, intimate celebrations that will have lasting memories for you and your guests for years to come.

- Event coordinator
- Celtic inspired cuisine
- Capacity for up to 100 people
- On-site bakery
- Full Celtic destination (including an Irish Pub and store adjacent to the event venue)

For booking information please call (610) 861-7631



**MCCARTHY'S
RED STAG PUB
AND WHISKEY BAR**



534 MAIN STREET
BETHLEHEM, PA 18018
redstagpub.com

PROUDLY SERVING THE COMMUNITY
for over
30
years



Powered by integrity.



Scan code for limited time \$75 savings

610.866.1076

PA010621 • NJ18491



BETHLEHEM AREA
PUBLIC LIBRARY

Summer Reading
and Learning Program

Join the summer reading and learning program to keep your kids reading when school is out. The library's Summer Reading Program begins in June (check BAPL.org for details). You may sign up at any library location or on the Bookmobile. The theme for this year's summer reading program is "Unearth a Story." This includes fun events around paleontology, archaeology and dinosaurs! You can expect lots of opportunities to spark curiosity, imagination and learning across all age groups. Every person in our community has stories waiting to be found and shared—through books, programs and local knowledge.

Events for kids include:

- Storytimes
- STEM activities
- Fun for all ages (K - 12)
- Fun and enriching special events
- Read to dogs
- Crafting and art workshops
- Prizes for reading

The library is the place to be this summer for adults looking for fun and educational activities as well.

- Open Mic Nights every Monday
- Yoga and Qigong events all summer long
- Film Club
- Fiber Arts group
- Book clubs and writing groups
- Much more



Check our calendar at bapl.org for an updated list of events. There is always something going on at the library!

Touchstone Theatre Presents



Young Playwright's Festival

May 17, 2026

3pm @ Northeast Middle School

\$15

All Are Welcome



Teen Ensemble

June 15-26, 2026

Mondays-Fridays, 1-5pm

\$375

Ages 13-18



Camp Touchstone

July 13-24, 2026

Mondays-Fridays, 9am-2pm

\$475

Ages 8-12

For more information visit touchstone.org | 321 East 4th St. Bethlehem, PA 18015





Northside Alive is a community-driven neighborhood revitalization process launched in 2018 by the City of Bethlehem and Community Action Development Bethlehem.

Northside Alive had a busy 2025! In an effort to keep our neighbors connected during the Friendship Park construction, we continued to host cherished neighborhood events, like Community Yoga, Block Parties and Movie Night Festivals. We are excited to celebrate the Grand Opening of Friendship Park on Saturday, May 16, and look forward to the Linden Street two-way conversion project happening in the near future.

Additionally, a new garden has sprouted up and is ready for spring planting. We were able to create this new space with support from the Bethlehem Health Bureau, Omega Protective Services and some Moravian University students, who provided the people power to build this space. The community garden is located at 52 E. Union Blvd. To learn more and reserve your **FREE** garden bed for this location, visit www.bethlehem-pa.gov/health-bureau.

Northside Alive has accomplished so many of our goals in the six years since the Northside 2027 plan was completed. We've recently reengaged with WRT urban planning consultants to update the neighborhood plan. The 2026 plan will

build on the successes of the original 2019 plan, which focused on **housing, economic vitality, public spaces** and **neighborhood identity**. Over the past few months, we've been working with neighborhood champions, business owners, community partners and City staff to gather insights. We look forward to sharing the vision and a five-year action plan for the future of Northside Alive with you at our upcoming Friendship Park Block Party on **Saturday, May 16, 2026**.

The Northside is bustling with activity so we've switched from quarterly newsletters to monthly updates. Make sure to sign up on our website if you want to stay in the loop with the neighborhood news!

Thank you to all of our community members, businesses, partners and sponsors that continue to support Northside Alive. We have a lot of exciting projects on the horizon, and we can't wait to continue our work together in 2026!

Dates and details about upcoming events are available at northsidealive.org/events and on our social media pages.

📷 @northside_alive | 📘 @Northside Alive



Visit northsidealive.org or scan the QR code to learn more about Northside Alive.



This newsletter serves to notify the community about events and investments in the City's Northside 2027 HUD-designated Neighborhood Revitalization Strategy Area (NRSA). NRSA's are intended to revitalize a targeted neighborhood by encouraging a coordinated approach through comprehensive place-based community development efforts. Translation and disability accessibility services are available upon request if you would like to learn about Northside activities and how to participate, including access for individuals with hearing and visual impairments. If you would like accommodations to access Northside Alive information, please call the Community Development Bureau at 610-865-7085. Servicios de traducción y accesibilidad para discapacitados disponibles previa solicitud si desea obtener información sobre las actividades de Northside y cómo participar, incluido el acceso para personas con discapacidades auditivas y visuales. Si desea adaptaciones para acceder a la información de Northside Alive, llame a la Oficina de Desarrollo Comunitario al 610-865-7085.



STOP IN TO ENJOY OUR *signature* RAMEN, RICE BOWLS AND BENTO BOXES

Fresh, house-made ramen

Variety of rice bowls

Broths prepared daily from pork, chicken, seafood and vegetables

Open all week including late Friday through Sunday. Ideal for dinner, weekend outings or late-night cravings! We are a BYOB restaurant and happily accommodate large group reservations.

328 S NEW ST., BETHLEHEM | 📘 📷
610.419.8007 | RAKKIIRAMEN.COM



2026 | City of Bethlehem Taxes

- 2026 City of Bethlehem Real Estate Property Tax Bills are due in full postmarked by **May 29, 2026**. After **May 29, 2026**, a 10% penalty will be assessed on all bills.
- All property taxes unpaid as of **December 31, 2026**, will be turned over to a collection agency.
- 2025 Earned Income Tax Returns are due on or before **April 15, 2026**.
- 2025 Business Privilege & Mercantile Tax Returns are due on or before **May 05, 2026**.

2026 REAL ESTATE TAX BILLS

Property Tax Millage Rates

The current (2026) millage rates for the City portion of the real estate tax bill are:

- Parcels located within Lehigh County – 6.21
- Parcels located within Northampton County – 19.64

City of Bethlehem 2026 Real Estate Property Tax Due Dates:

- **Discount (2%)**..... **03/31/2026**
- **Base** **05/29/2026**
- **Penalty (10%)**..... **12/31/2026**

Installment Plan: Installment payments may not commence after the first installment due date. A grace period of five (5) days beginning with the due date is allowed for each installment. If not paid within five days beginning with the due date, a penalty of 10% will be added to each delinquent installment. No discounts are allowed on installment payments unless the full tax is paid during the discount period. **Note:** If you are paying by installments, you will be billed for subsequent payments.

All property taxes unpaid as of **December 31, 2026**, will be turned over to a collection agency.

Questions or Assistance

For additional questions or assistance with obtaining a copy of a current property tax bill, please contact:

- **City of Bethlehem Tax Bureau Phone: 610-865-7022, option 5**
- **Email: TaxDepartment@Bethlehem-pa.gov**

For additional questions or assistance with paying a current property tax bill, please contact:

City of Bethlehem Bureau of Financial Services Phone: 610-865-7125

EARNED INCOME TAX & LOCAL SERVICES TAX

Earned Income Tax (EIT) Filing

The Earned Income Tax (EIT) rate for the City of Bethlehem is a 1% income tax that is assessed on the gross earnings of residents and non-residents and net profits of residents. Just like federal and state income taxes, EIT tax returns must be filed online at <https://efile.keystonecollects.com/#/login> or by mail on or before **April 15, 2026**.

Local Services Tax (LST) Filing

The Local Services Tax (LST) rate for the City of Bethlehem is \$52 per person who is employed or self-employed within the City of Bethlehem. Most employers withhold this tax and list it as the "LST TAX" on an employee's pay stub or W-2 form. Self-employed persons are responsible to file/pay the tax themselves quarterly.

The City of Bethlehem uses a third-party servicer for collection of Earned Income Taxes and LST Filing. Earned Income Tax filing and LST filings are collected and processed by:

- KEYSTONE COLLECTIONS GROUP
<https://keystonecollects.com/forms/>
866-539-1100, Monday – Friday, 8:30 am – 12 pm and 12:30 – 4 pm

To have forms automatically mailed to you, please contact Keystone Collections Group.

BUSINESS PRIVILEGE & MERCANTILE TAX/LICENSING

Business Privilege and Mercantile Tax/License Filing

A Business Privilege License (BPL) is required by all persons and/or businesses that engage in a business, profession or other commercial activity within the City of Bethlehem. The BPL annual license fee is \$25. The license period runs from May 1 through April 30 of the following year.

The 2025 Business Privilege & Mercantile Tax Return is due on or before **May 05, 2026**.

The City of Bethlehem uses a third-party servicer for collection of the BPL Licensing and collection of Business Privilege and Mercantile Tax.

All BPL registrations, Business Privilege and Mercantile tax payments and returns for the City of Bethlehem are processed by:

- Tri-State Financial Group, <http://www.tfgtax.com>
610-270-9520, Monday – Friday, 9 am – 4 pm

To have forms automatically mailed to you, please contact Tri-State Financial Group.

ADVERTISE WITH US.



There are 75,600* residents in the city of Bethlehem. Take advantage of this opportunity to promote your business while supporting your community at the same time!

Interested? Email us at marketing@ksand.com for more information on how your ad can be featured in this magazine.

Big news for the BASD!

Congratulations to Liberty High School alumni **Sid Tekumalla** and **Joseph Barlow**, who have officially been awarded a U.S. patent for a groundbreaking baseball helmet safety innovation they first developed in their senior-year engineering capstone class.

Their patented honeycomb design — made from specialized Nylon 6 and 12 — allows helmets to recover 90% of their shape after impact, making them safer and reusable. This is a huge step forward in player safety!

We are so proud of Sid and Joseph, and grateful to the teachers and mentors who supported this project from classroom idea to patented invention.

Liberty High School Class of 2013 graduate **Dr. Adam Uliana** was recognized as a 2025 “Forbes 30 Under 30” honoree in Energy & Green Tech.

Adam is the CEO and co-founder of ChemFinity Technologies, an NYC-based startup recovering critical minerals from waste to reduce pollution in energy-intensive industries. Founded in 2022, the company has raised more than \$6 million; joined major federal and private research programs, including Bill Gates’ Breakthrough Energy Fellows; and commercialized technologies based on Adam’s eight patents. Adam credits much of his journey back to Liberty.

- His passion for chemistry was sparked in Honors and AP Chemistry, inspired by Dr. Maureen Leeson.
- His years on Liberty’s Track & Field team taught him grit, resilience and the belief that hard work truly does beat talent.
- Liberty’s diverse student body prepared him to collaborate with people from all walks of life.
- And dual enrollment at Lehigh University, made possible through a Liberty scholarship, helped set the tone for college and career success.

Today, Adam designs new materials like “atom-scale LEGOs,” leads projects across four continents and works to reduce global emissions through smarter chemistry — all while remaining a proud Liberty graduate and Bethlehem native.

Congratulations, Adam. Your BASD roots are showing in the best way!



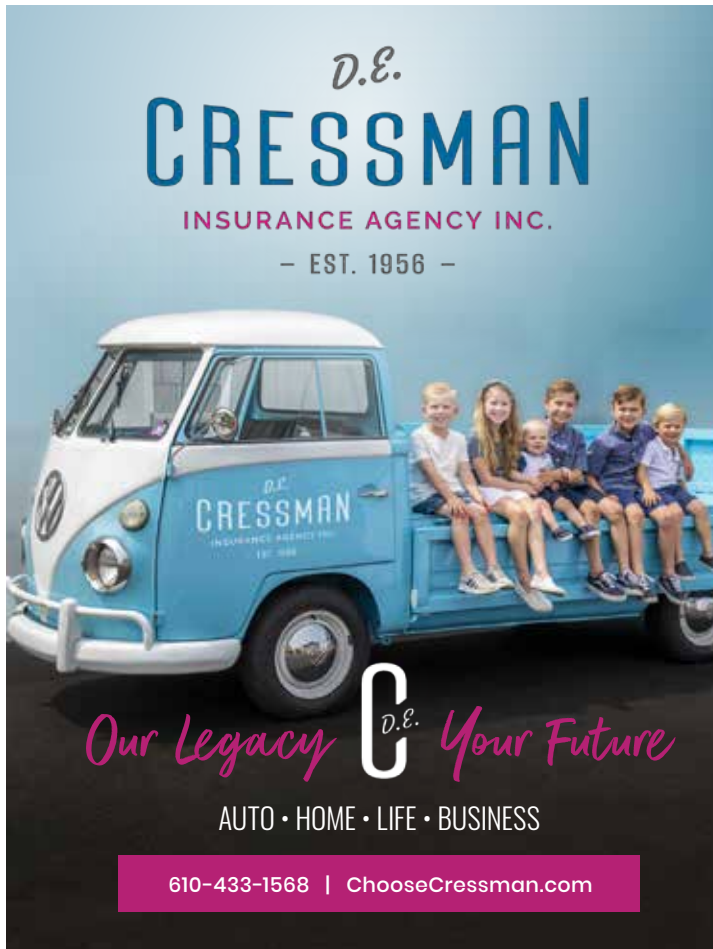
Sid Tekumalla



Joseph Barlow



Adam Uliana

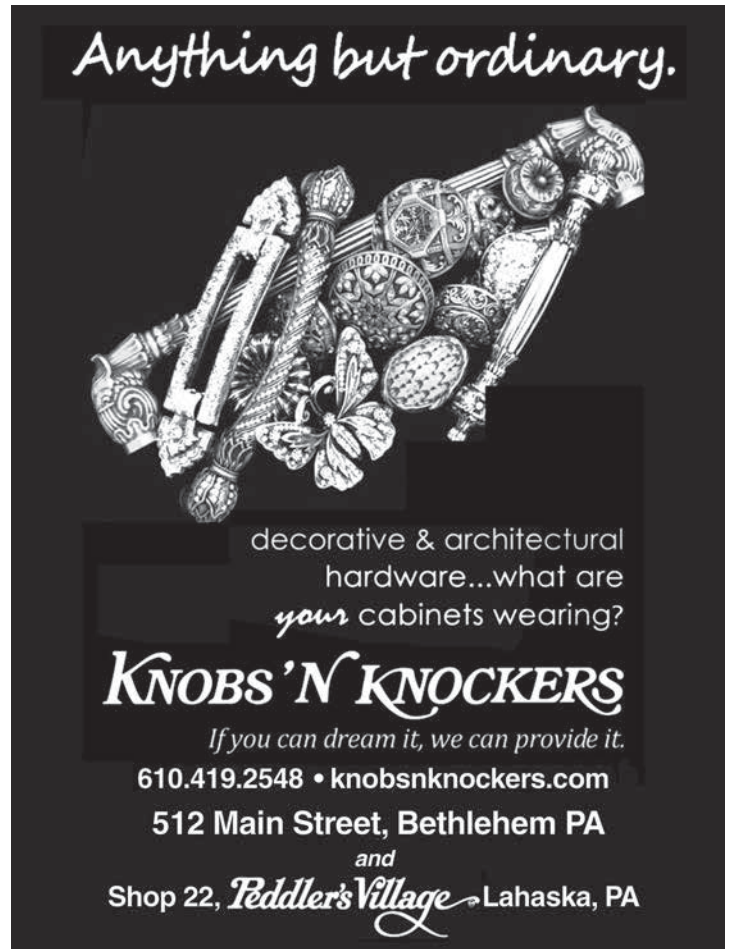


D.E.
CRESSMAN
INSURANCE AGENCY INC.
— EST. 1956 —

Our Legacy **D.E.** *Your Future*

AUTO • HOME • LIFE • BUSINESS

610-433-1568 | ChooseCressman.com



Anything but ordinary.

decorative & architectural hardware...what are *your* cabinets wearing?

KNOBS 'N' KNOCKERS
If you can dream it, we can provide it.
610.419.2548 • knobsnknockers.com
512 Main Street, Bethlehem PA
and
Shop 22, *Peddler's Village* → Lahaska, PA

**WEIGHT LOSS • JOINT PAIN
SKIN TIGHTENING**

RED LIGHT THERAPY



**DR. AUGELLO'S HEALTH
AND BODY MAKEOVER**

1578 Easton Ave., Bethlehem • 484-650-1701

888BurnFat.net



PLEASE HELP...

THE HISTORIC BETHLEHEM ROSE GARDEN BLOOM!

Planted in 1931, the Historic Bethlehem Rose Garden Park has long been a centerpiece of our city. In 2020, volunteers revived and redesigned the garden, adding native plants and pollinator-friendly habitats. Last season alone, our volunteers planted 90 roses, peonies, calla lilies, clematis, alyssum, dianthus and zinnias. The City has partnered with us, adding new walkways, replacing rose trellises and planting another 10 new trees.

We need volunteers to help keep alive the vision of a beautiful shared community space. No experience is necessary; volunteers come when they can and community service credits are available. Contact bjkozero@aol.com for details or drop by the Rose Garden on a Saturday morning!

Can't make it to the garden? You can still help us purchase flowers and essential supplies by donating to our **"Help Restore the Historic Bethlehem Rose Garden"** GoFundMe page: <https://gofund.me/3533d3232>.

The Bethlehem Fine Arts Commission

bringing
fineARTS
to the community

**BETHLEHEM
TOWN HALL,
ROTUNDA GALLERY
2026 EXHIBITIONS**



Bethlehem Area School District

- *Student Art Exhibition:* April 6 – May 14
Artist Reception: April 12, 2 – 4 pm

Bethlehem Palette Club

- *Members' Exhibition:* May 20 – June 28
Artist Reception: June 28, 1 – 3 pm

Michael Paladino

- *Mixed Media:* July 1 – August 10
Artist Reception: July 12, 2 – 4 pm

BFAC Curated Exhibition: Assemblages & Collages

- *Linda Kondikoff, Anna Kuo, Dominick Naccarato, Maryann Rider, Barbara Schulman and Rhonda Wall:* August 14 – September 22
Artist Reception: August 16, 2 – 4 pm



LOVELY EVENINGS IN BETHLEHEM'S STUNNING SCULPTURE GARDEN

The Bethlehem Fine Arts Commission (BFAC) proudly presents the 2026 Sculpture Garden Concert Series, with free open-air musical performances every Friday evening in June (5, 12, 19 and 26).

Our summer series reflects the rich cultural diversity of Bethlehem and of the greater Lehigh Valley, showcasing music from the best of regional and nationally known artists. Concerts take place in the City of Bethlehem's lush and beautiful Sculpture Garden, which is nestled in a shaded, art- and flower-filled hollow on the east side of City Hall. The garden is also a designated Certified Wildlife Habitat.



CELEBRATE CREATIVITY AND TRADITION AT BETHLEHEM'S 61ST ANNUAL FINE ART AND CRAFT SHOW ON MOTHER'S DAY WEEKEND!

- **When:** Saturday, May 9, 10 am – 5 pm AND Sunday, May 10, 11 am – 5 pm
- **Where:** Historic Downtown Bethlehem, PA (Main Street and surrounding areas)
- **How much:** Free admission

Visitors can enjoy street music, a children's fine art area, and a special artist-in-residence, all contributing to the show's unique atmosphere and appeal. The 2026 show anticipates welcoming approximately 50–90 fine artists and craft artisans. We hope to see you there!

Historic Downtown Bethlehem Presents

America

250

A Bethlehem Block Party

Sunday, July 12th

12PM - 5PM

SCAN FOR
UPDATES!



2 Spring & Summer Events

2026 SOUTHSIDE ARTS DISTRICT



Ages 21+



TICKETS



SIP & SLIDE SUMMER COCKTAIL CRAWL

SATURDAY JUNE 20

- MAY 24
- MAY 31
- JUNE 7
- JUNE 14

LIVE ON THE GREENWAY FREE CONCERTS AT HARMONY PAVILION

Sundays, 1-3 PM
201 Mechanic Street



Summer Restaurant Week

JULY 20-26



SOUTHSide
**ARTS
DISTRICT**

@SOUTHSIDEARTSDISTRICT | WWW.SOUTHSIDEARTSDISTRICT.COM



UPCOMING EVENTS

LIVE IN THE GARDEN CONCERT SERIES

Enjoy an 8-week, free concert series in the Bethlehem Rose Garden, presented in partnership with the City of Bethlehem and the Bethlehem Chamber of Commerce and sponsored by Zoellner Arts Center.

Held **Saturdays from May 9–June 27, 5:30–8:00 PM**, this family-friendly series features live music across genres, food trucks, and local beer and wine vendors.



SUMMER RESTAURANT WEEK

Savor the season with Summer Restaurant Week in Historic Downtown Bethlehem. From **June 21–27**, enjoy specially curated prix fixe menus for breakfast, lunch, and dinner at participating restaurants. It's the perfect time to revisit favorite spots or discover something new—no tickets required, though reservations are strongly recommended.

PRIDE COCKTAIL CRAWL

Join the LGBTQ Business Council and Bethlehem Chamber of Commerce on **Saturday, June 27th, from 1 PM - 5 PM** as we toast to Pride Month in style, explore Historic Downtown Bethlehem, enjoy exclusive themed cocktails, and connect with friends old and new in a joyful, inclusive atmosphere.



Visit LehighValleyChamber.org/Bethlehem for more!



CITY OF BETHLEHEM

10 East Church Street • Bethlehem, PA 18018

ECRWSS EDDM
Postal Customer

PRSR STD
US POSTAGE
PAID
LEHIGH VALLEY, PA
PERMIT NO 121

*Feel good about
your plumber.*

We are the Lehigh Valley's expert in plumbing, water heaters, drain cleaning, pipe repairs and roofer service.

Fast, clean, quality service with fair upfront prices. That's our promise to you!

**ROBINSON
PLUMBING**



RobinsonPlumbing.com

610-351-9889

Master LIC#208 Reg #PA024396



**Sewer Line
Inspections**



**Water Heater
Services**



**Water Softener/
Water Treatment**



Well Pumps



Sump Pumps



Drain Cleaning



Sewer Line Service



Water Line Repair



**Gas Line
Repair/Install**